

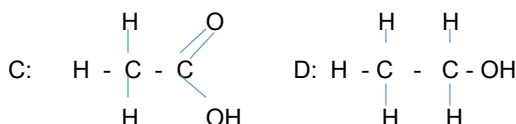
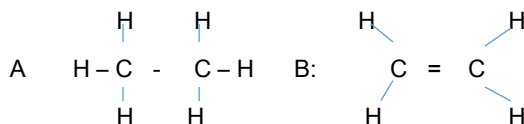
CATHOLIC DIOCESE OF MOSHI

URU SECODARY SCHOOL

CHEMISTRY

Exercise

- Using balanced chemical equations, show how:
 - Methane undergoes complete chlorination in the presence of sunlight
 - Ethene undergoes addition of hydrogen chloride
 - Ethanol reacts with sulphuric acid at 180°C
- (a) You are provided with compounds which have the following structural formulae.



- Give the name of the functional groups in each of the compounds A, B, C and D
 - Give the systematic (IUPAC) names of the compounds A, B and D
- (b) By using potassium permanganate, how can you distinguish between compound A and compound B?
- (a) Define isomerism
 - (b) Write down the molecular structure and IUPAC names of the isomers whose molecular formula is C_4H_{10}
 - (c) Name the homologous series of organic compounds which are represented by the molecular formulae:
 - $\text{C}_n\text{H}_{2n+2}$
 - C_nH_{2n}
 - $\text{C}_n\text{H}_{(2n+1)}\text{OH}$ in each case $n = 1, 2, 3, \dots$

GEOGRAPHY

Exercise

- (a) In what ways is the Rufiji River Basin project of importance to Tanzania?
(b) "Despite her geographical handicap, Switzerland has managed to develop industrially." Explain the reasons for this
- What are the possible human factors which may influence the development of nucleated settlement pattern?

3. (a) What is meant by solid waste disposal?
(b) What should be done in order to solve the problem of pollution caused by solid waste disposal?

KISWAHILI

JARIBIO LA KWANZA

Maelekezo.

Fanya maswasli yote

1. Eleza kazi mojawapo ya kila kiambishi kilichopigiwa mstari:-
 - a. Anacheza
 - b. Tunavipenda
 - c. Wanahangaika
 - d. Ruka
 - e. Aliyekuambia
2. Eleza njia zilizotumika kuunda maneno yafuatayo.
 - a. UDA
 - b. Ugiligili
 - c. Askari kanzu
 - d. Marehemu
 - e. Tikitimaji
3. Kazi ya fasihi andishi zinafananishwa na wembe mkali kwa jamii yetu. Thibitisha kauli hii kwa kutumia vitabu viwili vya ushairi ulivyosoma. (Toa hoja tatu kutoka kila kitabu)

BIOLOGY

Exercise

1. (a) (i) What is a reflex action?
(ii) Give four (4) examples of reflex actions.
(iii) Explain the importance of reflex action to animals.
(b) (i) State two (2) differences between Nervous control and hormonal control.
(ii) Why a person manages to climb a big tree when suddenly see a big lion.

2. (a) Explain the two (2) types of mutation in living organisms.
- (b) Give four (4) examples of genetic disorders caused by gene mutation.
3. (a) Explain the meaning of the following terms.
 - i. Transportation of Materials. ii. Mass flow.
- (b) Explain what would happen when a plant cell is placed in hypertonic solution.
4. Define the following terms as used in reproduction.
 - i. Fertilization. ii. Ovulation.

ENGLISH LANGUAGE

Exercise

1. Use appropriate relative pronouns from the box to fill the space in the following sentence.
 - i. The boy _____ hand was broken was taken to hospital.
 - ii. Our teacher _____ we like most will retire next month
 - iii. Finally we found a rusty key _____ opened the safe.
 - iv. Over his left shoulder, he carried a panga _____ was very sharp.
 - v. Winston Churchill _____ was once the prime minister of Britain was a good soldier.
 - vi. The book _____ cover was beautifully bound was stolen.
 - vii. The soldier gave out a signal _____ assured his colleagues that everything was fine.
 - viii. On his head was steel helmet _____ was fastened by a rubber band.
 - ix. The house was built by a wealthy blind man _____ lived in Kenya
 - x. There were some stones _____ served as seats.

(WHOSE, WHICH, WHO, THAT, WHOM)

2. (a) A person who sells flower is called _____
- (b) A doctor who deals with teeth is called _____
- (c) A man after his wife's death is _____
- (d) A person who passed away is called _____
- (e) A person who dresses people's hair is called _____
3. Re – write the following sentences as instructed;
 - i. My teacher did not agree with me. My headmaster did not agree with me. (use neither _____ nor _____)

- ii. The minister can make speech. The deputy minister can make a speech. (use either _____ or _____)
 - iii. Sophia cannot sing well. Helen cannot sing well too. (use both _____)
 - iv. He is such a lazy man that he can not feed himself (use _____ too _____ to _____)
 - v. She is such a fat girl that she can not walk (use so _____ that _____)
4. Change the verbs in bracket into their correct form.
 - i. She always _____ to school by bus. (go)
 - ii. Mr & Mrs Msuya _____ exercise every day. (do)
 - iii. Upendo _____ church yesterday morning. (go)
 - iv. When we arrived she _____ her homework. (do)
 - v. Masanga _____ twenty cows next year. (sell)
 5. Discuss character as portrayed by the playwright in the two plays that you have read. (at least three characters from each)
 6. Prepare a speech which will be delivered to the community on how to avoid corona virus. (250 words)

BASIC MATHEMATICS

Exercise

1. Use mathematical table to evaluate $\frac{\sqrt[3]{0.0715} \times (26.4)^2}{\sqrt{23140}}$
2. Solve for x if $49^{x+1} + 7^{2x} = 350$
3. Rationalize the numerator $\frac{3\sqrt{2}+3\sqrt{2}}{2\sqrt{3}-3\sqrt{2}}$
4. Two fruits are randomly drawn from a box containing 4 lemons and 6 mangoes. If the first fruits are not replaced before the second is drawn. What is the probability that (i) both are lemons (ii) the fruits are different.
5. (a) The arithmetic mean of two numbers is 15 and their geometric mean is 9. Find the numbers.
 (b) The 3rd, 5th and 8th terms of an A.P form the first three terms of the G.P, find the common ratio.

INFORMATION AND COMPUTER STUDIES (ICS)

Exercise

1. (a) what is a computer network
 (b) With the aid of diagram describe **star** topology and **bus** topology
2. Describe four roles of Information and communication technology to the society
3. Create an HTML document with the following information

- i. A web title (URU SECONDARY)
- ii. Write HTML code to display the following in a webpage

No.	BRAND NAME	OS	SPEED
1	HP	WIN98	1GB
2	TOSHIBA	WINXP	2GB
3	DELL	WIN7	3GB

LITERATURE IN ENGLISH

Exercise

Instructions:

Answer all questions

1. With one example, write short notes on the following literary terms:

i. Title of a literary work	vi. Style
ii. Setting	vii. Themes
iii. Plot	viii. Conflict
iv. Point of view	ix. Message
v. Language diction	x. Philosophy
2. Fill in the blanks with an appropriate literary term:
 - i. Bakari has two baby boys, John and Jimi. John is shorter than his young brother Jimi, but his father calls John **"my tallest child in my family"** _____
 - ii. Janeth is married to Jamuhuri. They have one baby girl, Suzy. Suzy is so good at mathematics that her parents call her **"our calculator"** _____
 - iii. A type of metaphor that uses auxiliary verbs in comparison _____
 - iv. Jonas works hard because he has may mouth to feed _____
3. If you were watching a movie at home and it happens that you are watching ***"The Lion and the Jewel"*** what kind of person would you call **BAROKA**? Give five points.
4. Would you advice your friend to study literature? Give six reasons to support your answer.

CIVICS

Exercise

1. "Globalization is a blessing to Tanzania" justify the statement.
2. Show how globalization perpetuate poverty in African countries.
3. Discuss six function of parliament of united republic of Tanzania.
4. Examine six importance of life skills to the youth of Tanzania.
5. Tanzania is a signatory of 1948 united nation declaration of human right. To what extent are human right protected in Tanzania.

HISTORY

Exercise

1. Briefly explain in short the following historical terms
 - (a) African Independent churches
 - (b) The second exploitative mode of production
 - (c) Political instability
 - (d) Assimilation policy
 - (d) Colonial economy
2. In six points, explain the importance of museums to national development
3. Why MajiMaji were unforgettable events in Tanganyika

PHYSICS

Exercise

1. (a) Define the following terms:
 - (i) Equilibrium (i) Centre of gravity
- (b) State the conditions for a body to be in equilibrium when subjected to a number of parallel forces.
- (c) A uniform half-metre scale AB is balanced horizontally across a knife edge placed 15cm from A. A mass of 30g is hung from the end A. What is:
 - (i) The mass of the scale.
 - (ii) The force exerted on the scale by the knife edge?
2. (a) Give four differences between boiling and evaporation.
- (b) Why spirit poured on the skin feels much colder than water at the same temperature?
- (c) (i) The specific latent heat of ice is about 33600 J Kg^{-1} . What does it mean?
 - (ii) Into an iron vessel of mass 100g, surrounded by non-conducting material and containing 300g of water at 15°C is dropped a lump of iron of mass 400g, which has been heated in a furnace of 1000°C . The vessel and its contents are now found to weigh 773g. Calculate the specific latent heat of steam.

3. (a) (i) Explain why the image of an object formed by a plane mirror is called a virtual image?
- (ii) A concave spherical mirror of radius of curvature 20cm forms an erect image 30cm from the mirror and 5cm high. Find the position and size of the object and show with a scale diagram how the image is formed.
- (b) (i) Explain what is meant by critical angle.
- (ii) State the conditions under which total internal reflection of light occurs.
- 4.(a) (i) State the law of flotation and the Archimedes principle.
- (ii) A body weighs 0.52N in air. Totally immersed in water it weighs only 0.32N while its weight when immersed in another liquid is 0.36N. Determine the density of the other liquid.
- (b) (i) Briefly explain how buoyant force exerted by a fluid arises.
- (ii) A liquid mixture of water and alcohol has a density of 900kg/m³. Find the mass of alcohol in one litre of the mixture. (One litre = 1000cm³)

COMMERCE

Exercise

1. All agents are middlemen, but not all middlemen are agents. Discuss this statement with vivid examples.
2. As a business student, you're invited to give seminar to the nearby school about insurance. Briefly explain the procedures of taking insurance contract until compensation.
3. Graphically, explain the systems of taxation and explain applicability to the society.

BOOK KEEPING

Exercise

1. Define the following terms;
 - a) Prudence
 - b) Business entity
 - c) Going concern concept

d) Material concept

e) Dual concept

2. Given the following transactions;

a) Goods sold to Mwanja tsh 2000 was recorded in error to Mwamba

b) Sales overcasted by 10,000

c) Rent under casted by 35,000

d) Sold premises tsh 15,000, but recorded in error to sales account.

Note; Difference in trial balance. 45,000

Required

a) Journal entry

b) Suspense account

3. Outline any five sources of fund for non-profit organization.

4. Uru school Bus was bought for tsh 5,000,000/= on 1st January 2010 and expected to last for five years.

Required

By using some of the years digits open;

a) Bus account

b) Provision for depreciation account

c) Profit and loss account

d) Balance sheet

5. a) Define budgeting

b) Outline any five objectives of auditing